



***Drive Eco Friendly***

# **Product Technical Specification**



# GREEN FUEL FOR A GREENER TOMORROW

**India is currently the world's 4th largest emitter of greenhouse gases, and its transport sector accounts for 13% of the country's energy-related CO<sub>2</sub> emissions (MoEF, 2010). However, India's growing transport sector can become more sustainable and climate compatible by aligning development and climate change agendas. As total Diesel demand for year 2016 is 155.7 billion Litres and will be increase in 6-8% year after year till 2023.**

**On an average calculation of 5% blend with the diesel will peg the requirement at 7.785 billion Litres of bio diesel. However the total production still under 150 million Litres of Bio Diesel annually hence there is huge demand supply gap exists.**



**Eco Friendly Fuel**

## Comparison of Calorific Value of High Speed Diesel and Bio-Diesel

PRODUCT	UNIT	GROSS CV	% OF PURITY	NET CV	SPECIFIC GRAVITY	EFFECTIVE CV
(1)	(2)	(3)	(4)	(5) = (3)X(4)	(6)	(7) = (5)x(6)
HSD	Kcal/Kg	10700	95%	10165	0.820	8335
Bio-Diesel	Kcal/Kg	9600	99.5%	9552	0.875	8358

\* Net Calorific Value = Gross Calorific Value X %Gross Calorific Value.

# Effective Calorific Value = Net Calorific Value X Specific Gravity.

## Emission Comparison with Bio-Diesel and HSD

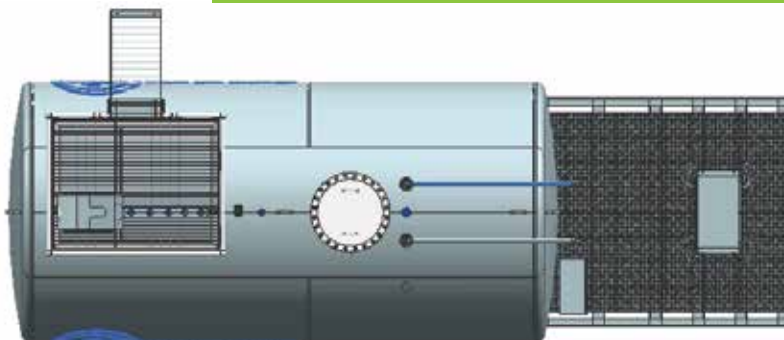
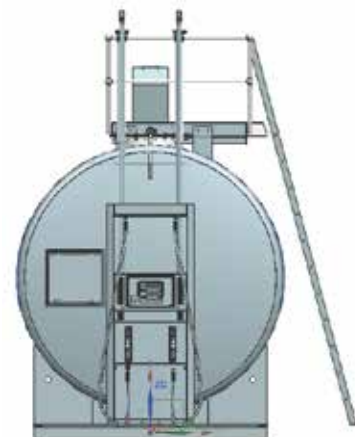
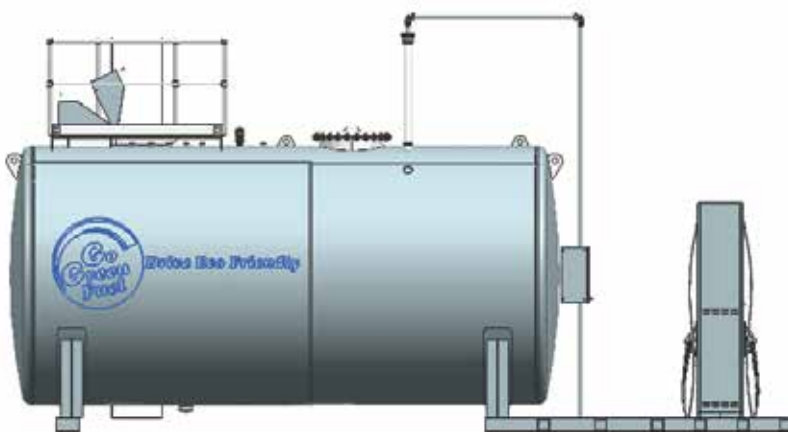
Emission Type	B100 Biodiesel	B20 Petro-diesel
Total Unburned Hydrocarbons	-93%	-30%
Carbon Monoxide	-50%	-20%
Particulate Matter	-30%	-22%
Sulfates	-100%	-20%
PAH (Polycyclic Aromatic Hydrocarbons)	-80%	-13%
nPAH (nitrated PAH's)	-90%	-50%
Ozone potential of speciated HC	-50%	-10%



**Eco Friendly Fuel**

# **Integrated Tank and Dispensing System**

**Gogreen Bio Energy Initiating this Integrated Tank and Dispensing system for a early start with Low Investment and High Returns.**



**GOGREEN BIOENERGY INDIA PRIVATE LIMITED**



Eco Friendly Fuel

## Secure Policy

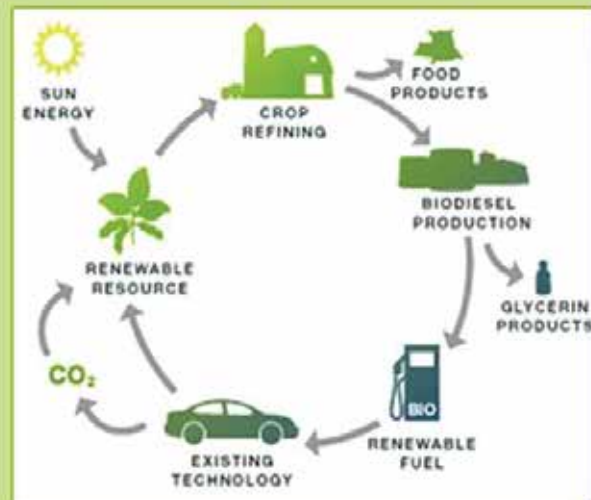
- **Under 1-4 Year aged Vehicles are covered under Secure Policy**
- **50 Paise of 2 rupees Profit is allocated for Secure Policy**
- **This is to ensure the Consumer for any damages prevent to happen by usage of this Fuel**
- **The Vehicle/Generator must use the biodiesel continuously**
- **Claim must be accompanied with the Survey Report**
- **Survey inspector charge of Rs. 5000 must be borne by the customer**

## From Farm to Fuel

### From Farm to Fuel

Biodiesel is a product of the ecological process powered by the sun. By tapping into the farm-grown oil seed produce, biodiesel can be extracted and processed for use as a clean-burning fuel.

The oil-seed crops have various uses ranging from food products for humans and animals, to glycerin for cosmetics and oil for cooking. Biodiesel is just one product of these crops.



## Sailent Features of Bio-Diesel

### SALIENT FEATURES OF BIODIESEL

- |                                 |                            |
|---------------------------------|----------------------------|
| ✓ Environment-friendly          | ✓ Extends life of engine   |
| ✓ No modification of engine     | ✓ Safe to handle and store |
| ✓ Costs less than normal diesel |                            |



**Eco Friendly Fuel**

**G-Power**



## **Commercial Benefits of G-Power**

- **Combustion Improvers**
- **Corrosion Inhibitors**
- **Detergent Cleaners**
- **Stabilizing Agents**
- **Water Dispersants**
- **Lubricity Enhancers**
- **Cold Flow Improvers**

**[www.gogreenbioenergy.com](http://www.gogreenbioenergy.com)**



**GOGREEN BIOENERGY INDIA PRIVATE LIMITED**

**e-mail: [info@gogreenbioenergy.com](mailto:info@gogreenbioenergy.com)**

**Toll Free Number: 1800 3000 5901**

**Corporate Office:**

**Concorde Towers, UB City, 1 Vittal Mallya Road,  
Level 15, Bangalore, Karnataka, India, 560001**

**Plant Location:**

**No.56/3, Moparahalli Kasaba Hobli, Doddaballapura Taluk  
Bangalore(R) Dist-561203, Karnataka, India.**

